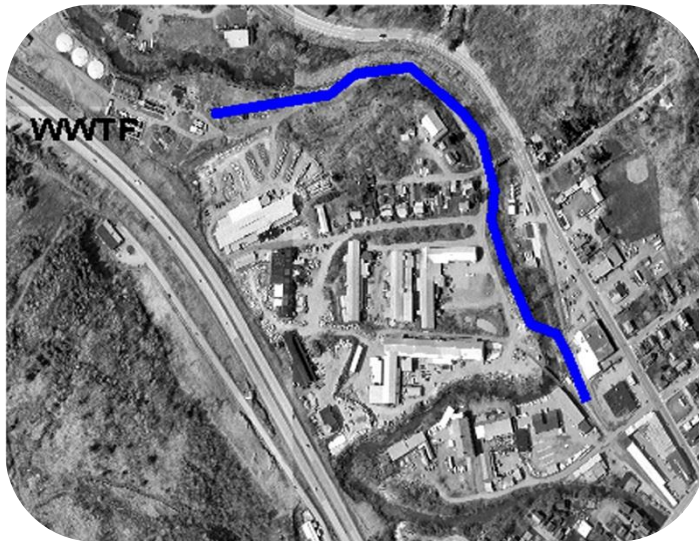


SEWER TRUNKLINE EVALUATION

CITY OF BARRE, VERMONT



Project Area



TV Inspection

In May 2003, the City of Barre was issued a 1272 Order by the Agency of Natural Resources Wastewater Management Division. The Order contained several required tasks related to all of the City's sewer collection pipes 15 inches or greater in diameter. The City's network of large sewer mains is termed locally as the East Side Trunkline and the West Side Trunkline.

The first phase of work involved televising the interior of approximately 3,000 linear feet of 24-inch and 30-inch sewer main just upstream of the Wastewater Treatment Facility, and preparing an evaluation report to document the trunkline conditions and present recommended improvements. The remainder of the City trunklines and the five siphons crossing the Stephens Branch were inspected in a second phase, which also included preparing a comprehensive Preventative Maintenance Program for the entire City of Barre wastewater collection system.

KEY FEATURES:

- Developed first formal Preventative Maintenance Program in Vermont.
- Established proactive compliance with future NPDES permit conditions for CMOM program requirements.
- TV inspection of 5 siphons and approximately 3.6 miles of large diameter sewer mains.
- Data from TV inspection and field surveys incorporated in a Geographic Information System for the sewer system.