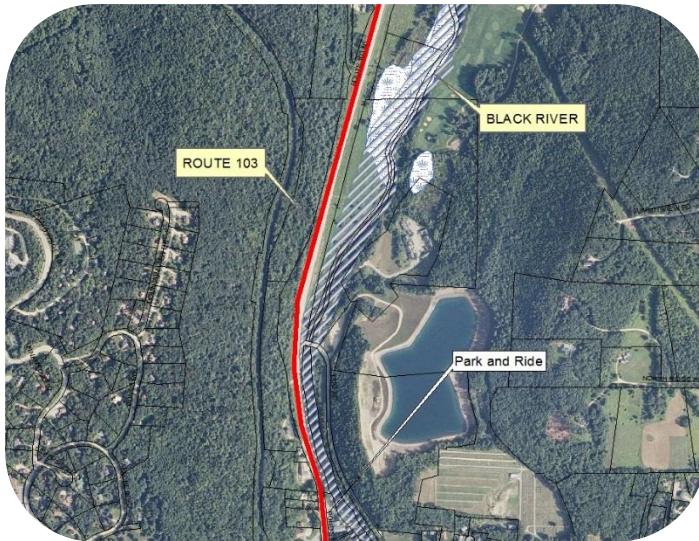
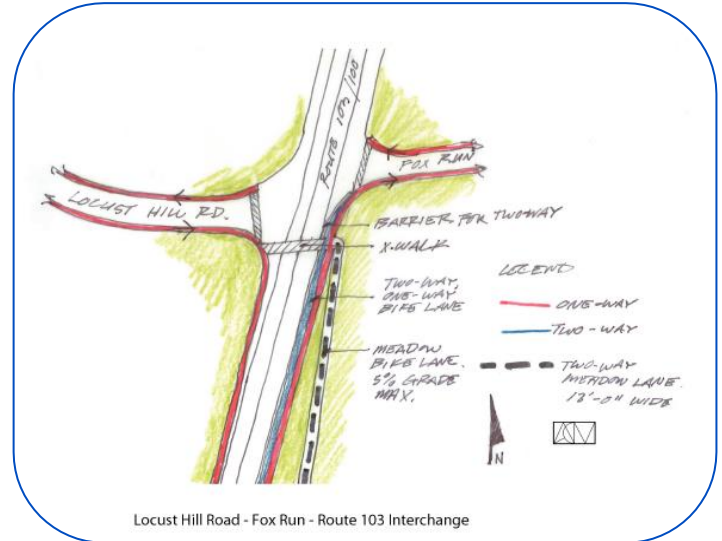


BIKE/PEDESTRIAN PATHWAY STUDY

VILLAGE OF LUDLOW, VERMONT



Project Orthophoto



Conceptual improvement

The Town of Ludlow received funding through the Vermont Transportation Enhancement Program to plan for, and identify issues with construction of a bicycle and pedestrian path or facility connecting the northern end of the Village with Jackson Gore, Buttermilk Falls and the Lakes District.

Dufresne Group was hired to identify and prioritize improvements, create a conceptual plan for the project, obtain public input through local concerns meetings, assess the role of historic, archaeological and environmental constraints, and create a preliminary cost estimate of the project to assess its overall feasibility.

The project encompassed the area from the existing Park and Ride at the Fire Station to the northern town boundary on East Lake Road. The most feasible alternative to link the Park and Ride to Buttermilk Falls was identified as Phase 1. Phase 2 is envisioned as an extension from Route 103 to the north along East Lake Road.

KEY FEATURES:

- Provides a pathway from the existing Park and Ride to the Buttermilk Falls and Jackson Gore recreation areas.
- Shared-use path along the Route 103 roadway shoulder endorsed by VTrans representatives.
- Minimal permitting issues as the pathway extension onto Jackson Gore required a minor Act 250 amendment.
- The pathway parallel to the Black River avoids wetlands and flood plains.